

DB usability as if

HYTRADBOI Feb 28, 2025

Jonathan Edwards

@jonathoda

jonathanmedwards@gmail.com

<https://alarmingdevelopment.org>

1. Displaying relationships

People

- Name: **John Doe**
- Last Contact: 2019-05-13
- Organization: Zombocom
- Notes: Tech Strategy and Delivery Lead. Research on data from products within company to assess market value, making decisions about what IT products should be bought. From user study survey: "Computer Science (2001). Excel weekly. SQL and Java/VB years ago. Some R."

P2 Categorization

Category	Study	Tried?	P2 Categories
			Description
BI	SM	My Machine	Business Intelligence/Analytics type position, also spreadsheet user (business analyst, data analyst, quant, data reporter, warehouse DBA etc.)

Timeline

Date	Type	Duration	Details
2019-05-13	Email		I sent an email with a link to the SIGBLAH paper, thanking for help.
2019-03-21	Email		Email exchange where he approved the quotes.
2018-06-11	User Study	60	Did the user study (GARH 531).
2018-06-09	Email		He responded to the user study recruiting email.

Quotes

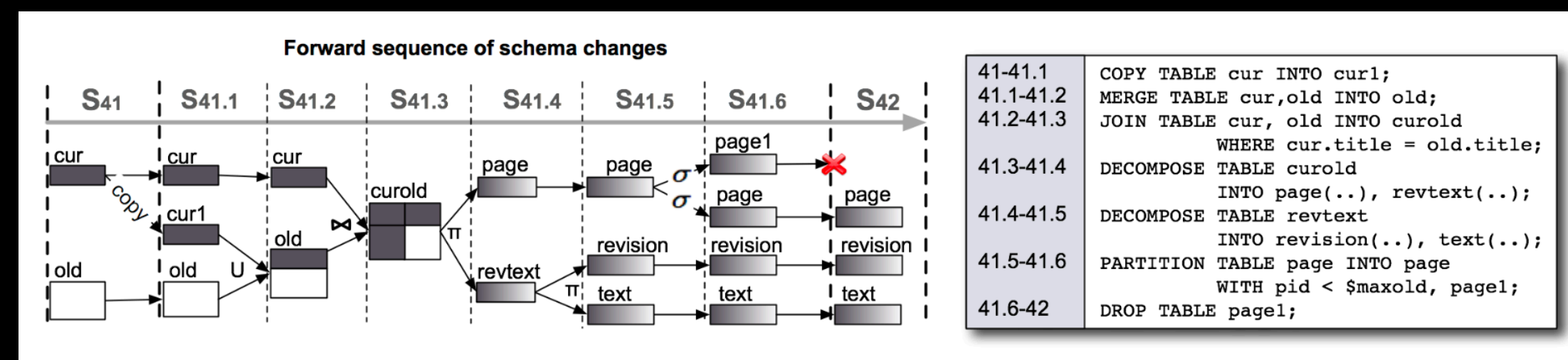
Quote	Approved for Publication?
"Yes, the manual join made sense, but that was a very simple situation. I wouldn't want to have done the joins on this [more complicated database]. The fact that I was just able to double-click and expand it out, that meant, it dumbed the task down to the level that I was happy performing it."	Yes
"You've got massive lists, and they're not ordered alphabetically. You've got table names, and field names, and sometimes they are not very English."	Yes
"I couldn't imagine doing that [course catalog] activity in Excel. The first example was simple enough, but once you start to do a couple of VLOOKUPS, I think you're starting to go beyond what Excel is really about."	Yes

Observations

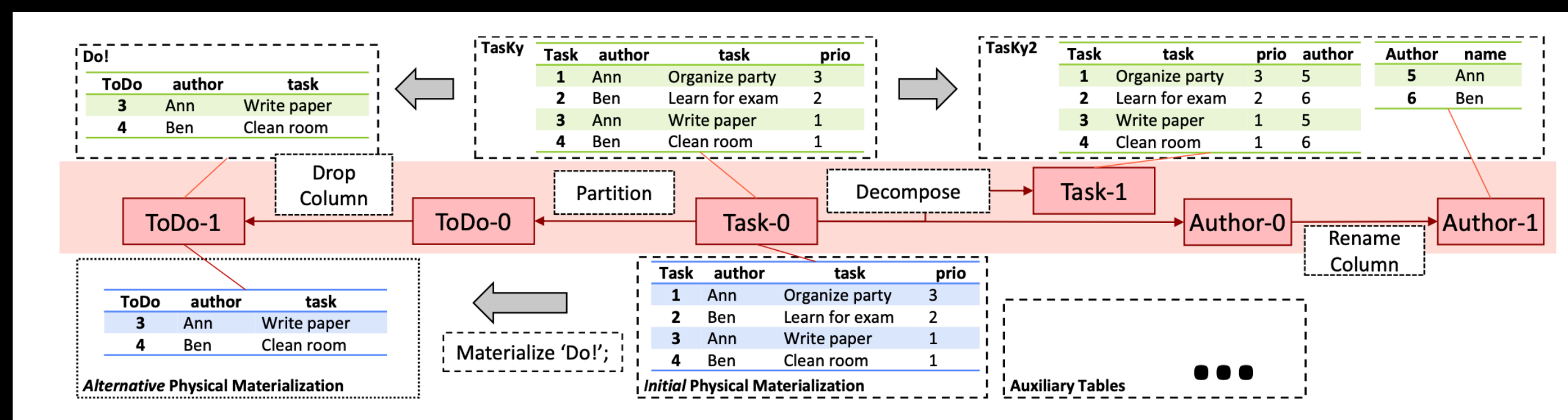
Category	Frustr	Observation	Refined Observation	Quotable?	User-Specific Notes
Formulas		Where to enter formulas	After formula field inserted, initial trouble learning where to enter formula		Tried to press equals tried to do this in the perspective).

Ultorg <https://www.ultorg.com/>

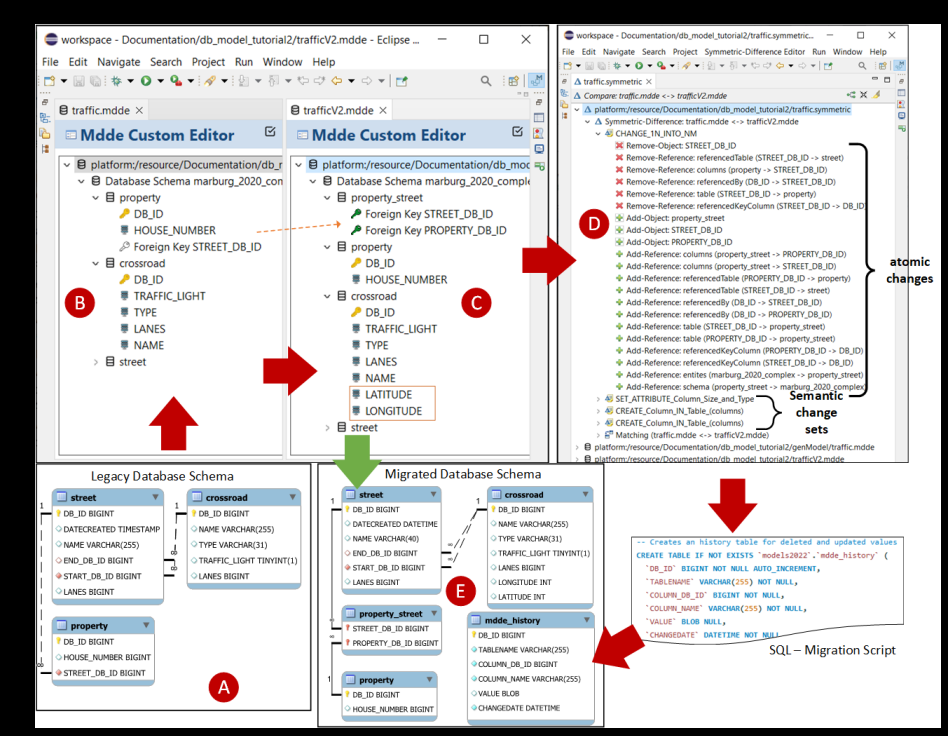
2. Interactive schema evolution



Carlo A. Curino, Hyun J. Moon, and Carlo Zaniolo. 2008. **Graceful database schema evolution: the PRISM workbench.** Proc. VLDB Endow. 1, 1 (August 2008), 761–772. <https://doi.org/10.14778/1453856.1453939>



Kai Herrmann, Hannes Voigt, Torben Bach Pedersen, and Wolfgang Lehner. 2018. **Multi-schema-version data management: data independence in the twenty-first century.** The VLDB Journal 27, 4 (August 2018), 547–571. <https://doi.org/10.1007/s00778-018-0508-7>

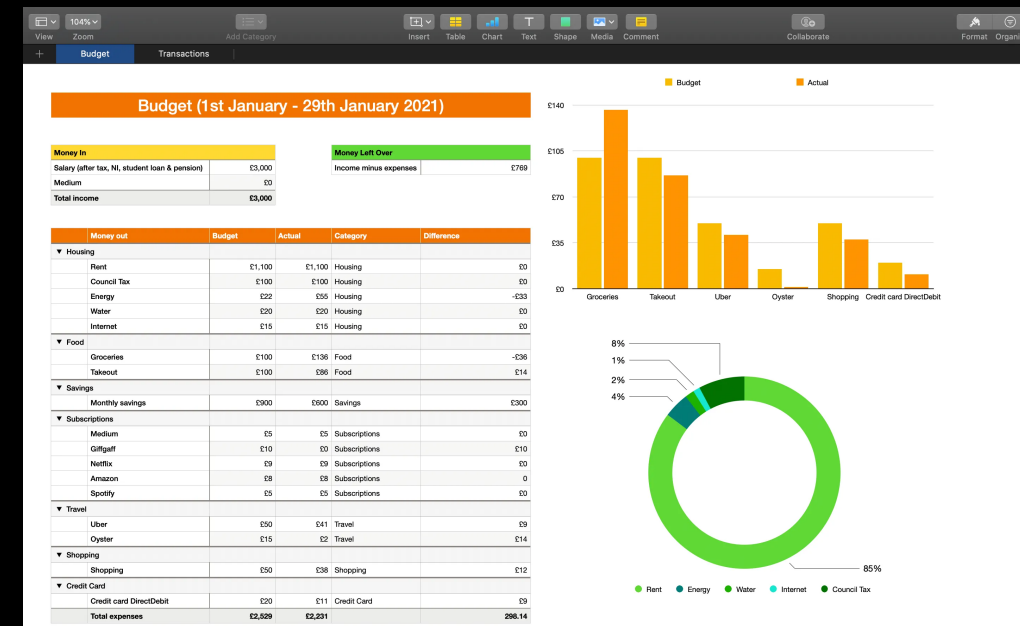


Torben Eckwert, Michael Guckert, and Gabriele Taentzer. 2022. **EvolveDB: a tool for model driven schema evolution.** 25th International Conference on Model Driven Engineering Languages and Systems (MODELS '22). <https://doi.org/10.1145/3550356.3559095>

3. Version control for data and schema

“Frieda”

Budget-Official-2013



2014 revisions



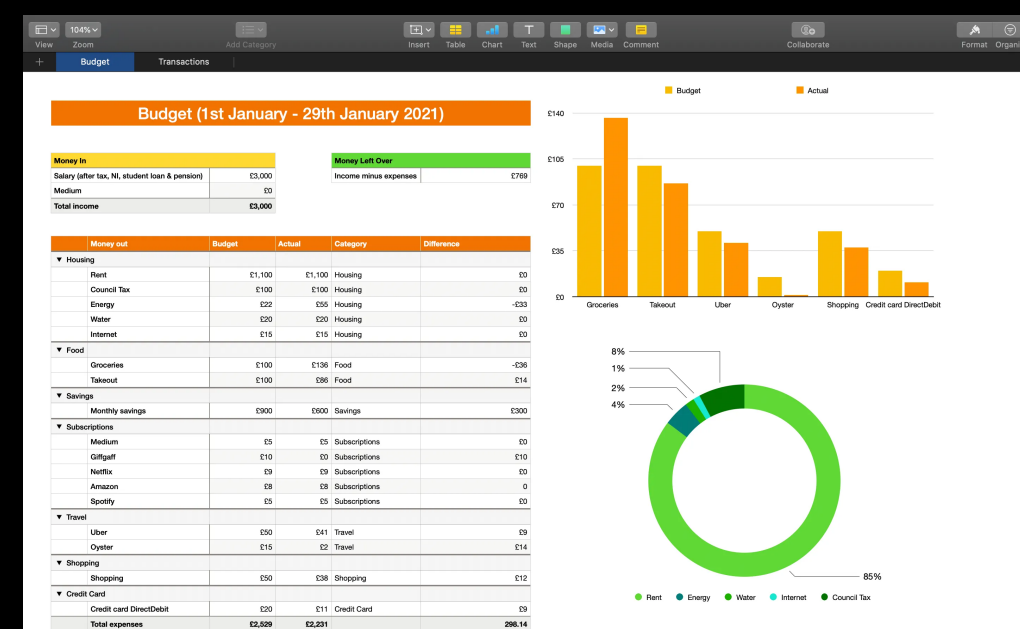
Budget-Official-2014



2013 customizations



Budget-Custom-2013

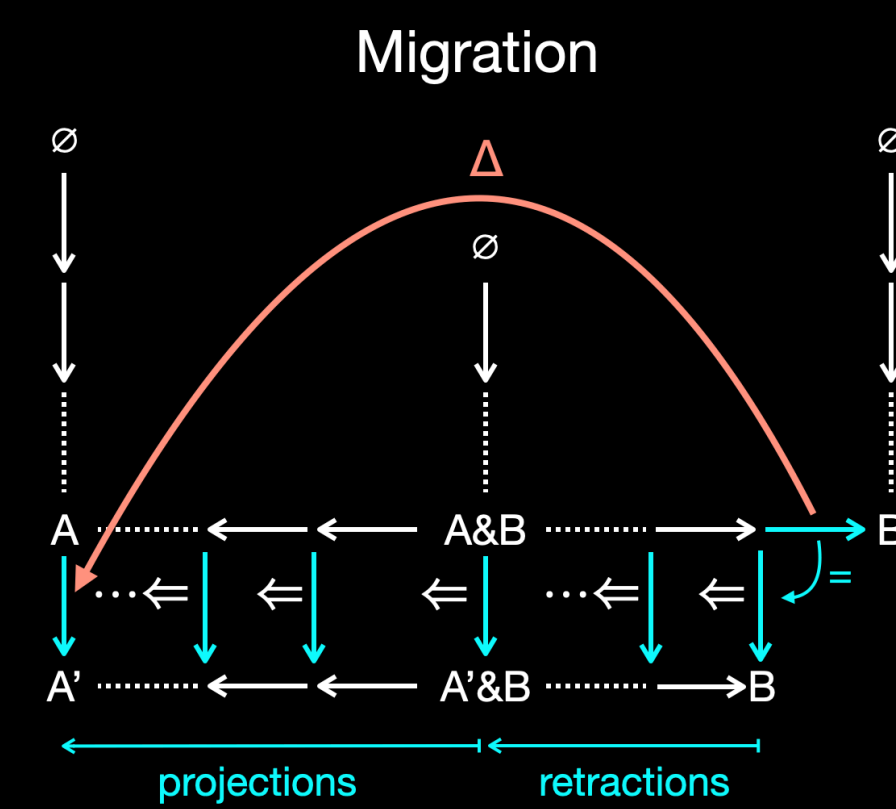
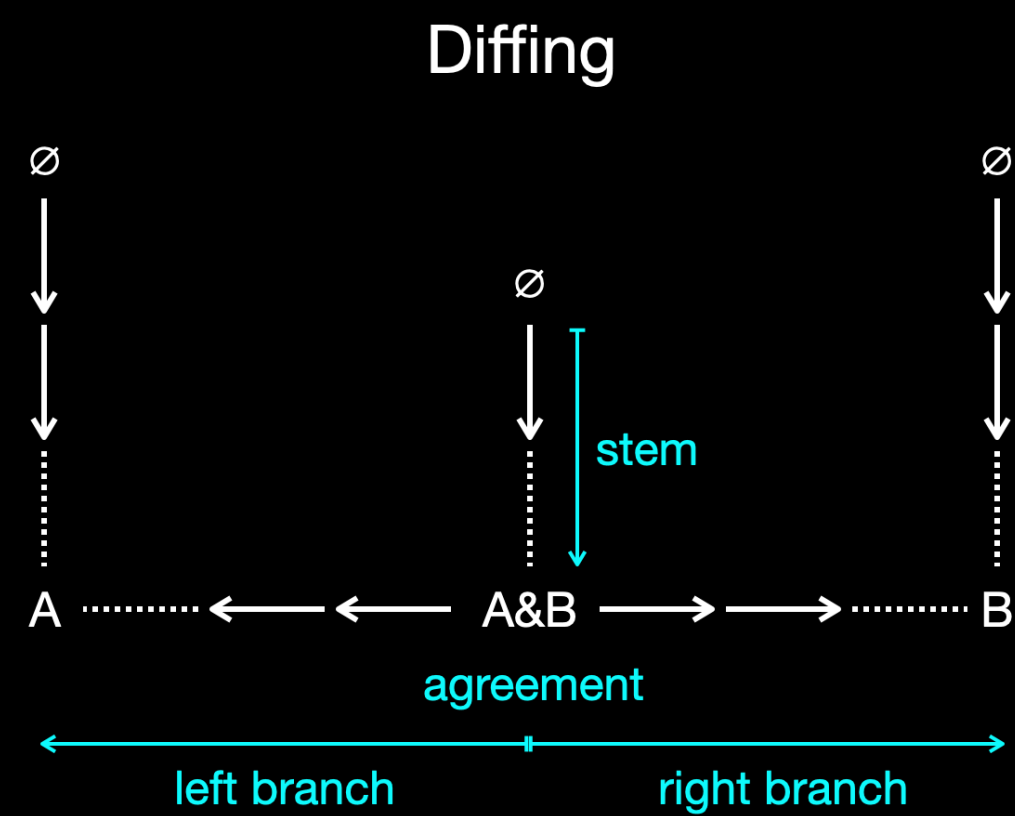


2014 customizations

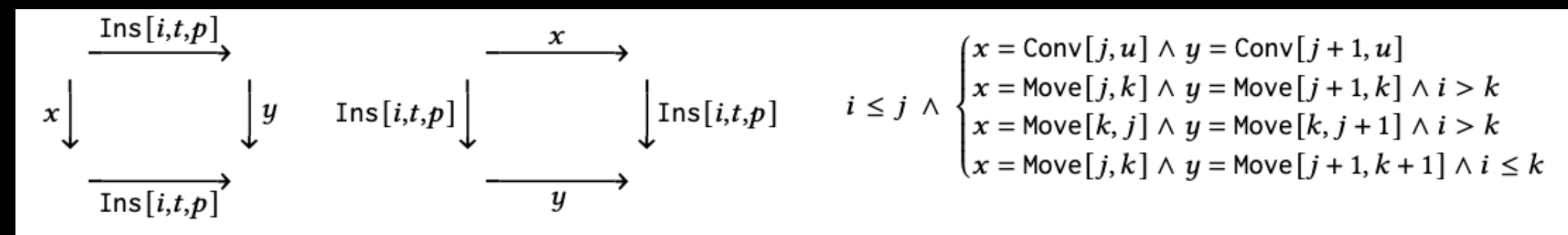


Budget-Custom-2014

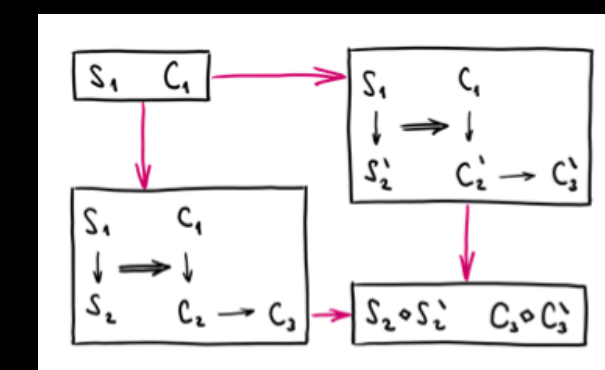
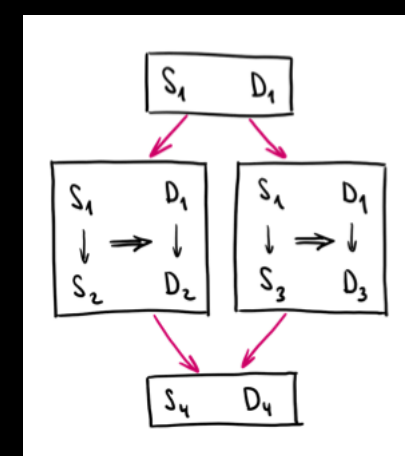
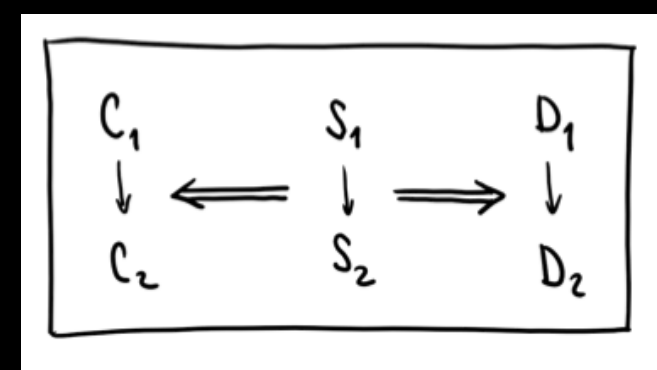




Jonathan Edwards. 2024. **Operational Version Control** <https://vimeo.com/944945281/536e1e0d31>



Jonathan Edwards and Tomas Petricek. 2021. **Typed Image-based Programming with Structure Editing**. Human Aspects of Types and Reasoning Assistants (HATRA'21), Oct 19, 2021, Chicago, US <https://arxiv.org/abs/2110.08993>



Jonathan Edwards, Tomas Petricek, Tijs van der Storm, Geoffrey Litt. **Schema Evolution in Interactive Programming Systems**. The Art, Science, and Engineering of Programming, 2025, Vol. 9, Issue 1, Article 2 <https://arxiv.org/abs/2412.06269>